

KAISER PERMANENTE COMMUNITY FUND

Successfully changing the conditions for health

The Kaiser Permanente Community Fund at the Northwest Health Foundation exists to create health where it begins – in our neighborhoods, schools, and workplaces. We invest in efforts to create opportunities for health and identify what works best to create lasting change. Since 2004, KPCF has awarded over \$30 million dollars to more than 140 organizations. These funded partners achieved many significant accomplishments. Included in those accomplishments are system changes to improve health.

Since 2009, we identified **129 system changes that shifted or realigned status quo conditions** through changes to the built environment, organizational practices, and public policies.



Public Policy

A written policy change enacted by a government agency.



Organizational Practice

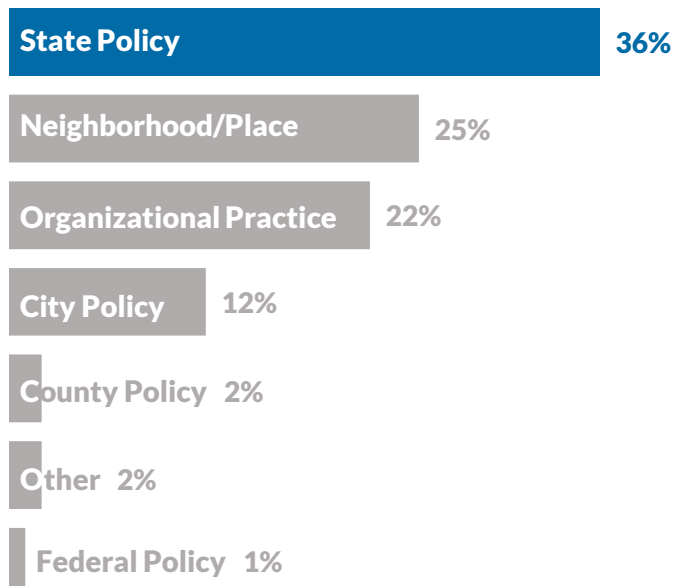
A change in practice at a non-government, for profit, or government agency.



Neighborhood/Place

A physical change to the built environment such as a new grocery store, park, sidewalks, etc.

State Policy was the most common type of system change identified (36%).



KPCF SYSTEM CHANGE HIGHLIGHTS



IMPROVING COMMUNITY SPACES

Highlands Neighborhood Association established a Community Center, coordinated a lighting project, and successfully advocated for a 1 mile trail in Longview, Washington.



CULTURALLY-SPECIFIC MARKET & INCUBATOR

Hacienda CDC launched Portland Mercado, Portland's first Latinx public market and commissary kitchen, to create development opportunities for low income Latinx immigrant entrepreneurs.



ADDRESSING RACIAL DISPARITIES IN SCHOOLS

Resolutions Northwest worked to incorporate Restorative Justice into several Portland Public Schools aimed at reducing disciplinary action & racial disproportionality, and improving academic outcomes.



INSPECTIONS PROGRAM FOR SAFER HOUSING

Community Alliance of Tenants worked with Clackamas County to create a new property maintenance inspections program that can deal more quickly and effectively with resident complaints.



PAID SICK LEAVE FOR PORTLAND WORKERS

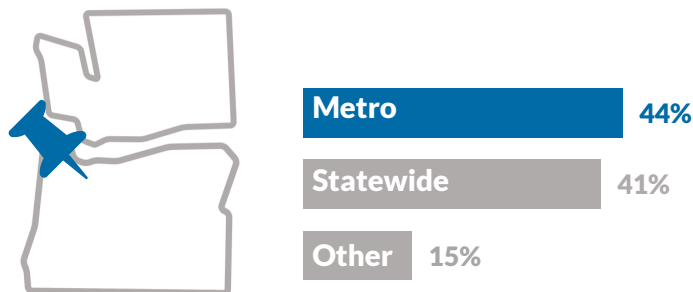
Family Forward and Oregon Progress Forum successfully advocated to pass a city ordinance mandating that all employees in Portland may accrue and use paid sick time.



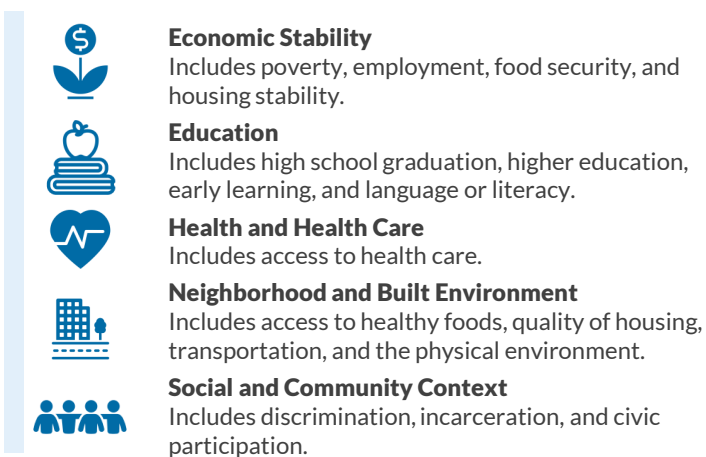
FOSTER YOUTH ADVOCACY

Children First for Oregon supported foster youth to successfully advocate for the passage of a bill to ensure foster youth rights and establish a public advocate in the Governor's office.

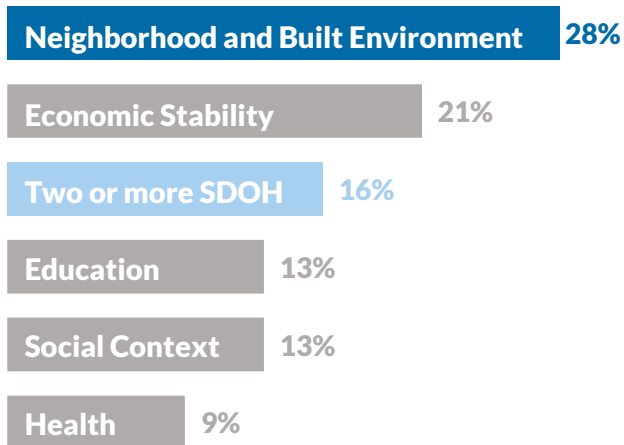
KPCF funded organizations in Oregon and Washington. Most system changes affected the **Portland Metro Area** - Multnomah, Washington, Clackamas Counties (OR) and Clark County (WA).



KPCF system changes targeted various **social determinants of health** (SDOH) defined by Healthy People 2020.



The most frequently targeted SDOH was the **neighborhood and built environment** (28%). 16% of system changes targeted **two or more of the social determinants of health** listed.



FLAT-LINING PRISON GROWTH

Partnership for Safety and Justice successfully advocated for passage of a bill to flat-line prison growth and re-invest saved funds into programs that reduce incarceration and recidivism.



TUITION EQUITY FOR OREGONIANS

Basic Rights Education Fund, Fair Share Research, and Oregon Bus Project successfully advocated to pass a bill allowing undocumented students that graduated from Oregon high schools to pay resident tuition at all Oregon public universities.



INTEGRATED EARLY LEARNING

The Children's Institute advocated for the establishment of the Oregon Kindergarten Partnership & Innovation Fund, which funds innovative ways to incorporate early learning into elementary schools.



EQUITY ANALYSIS IN PUBLIC TRANSPORTATION

Advocacy by OPAL Environmental Justice contributed to a new rule by the Federal Transit Administration requiring an equity analysis prior to any change in transfer times.

METHODOLOGY

We sought to identify system changes that resulted as a contribution of KPCF funding. **We defined system changes as shifting or realigning status quo conditions through changes in the built environment, organizational practices, or public policies.** Although we believe cultural norms are system changes, we did not include them in this study due to challenges in documenting the change.

Informed by an **Outcome Harvesting methodology**, the process involved the following steps.

- Identified potential system changes by reviewing grant documents for 173 projects funded from 2005-2016.
- Verified system changes using secondary resources such as text from passed bills, newspaper articles, and interviews.
- Solicited input from key stakeholders at Kaiser Permanente and Northwest Health Foundation.
- Conducted interviews with 29 funded partners.
- Categorized verified system changes by key characteristics.